

Sanstha Establishment Year: 1939

Nutan Vidyalaya Shikshan Santha's

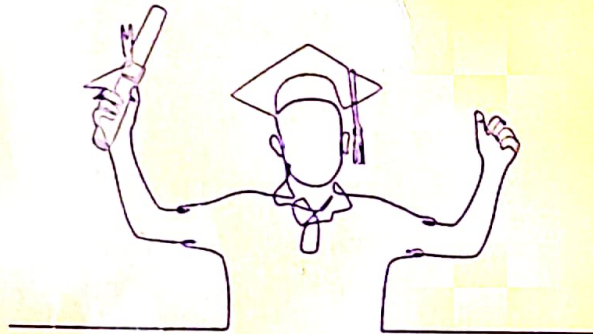
College Establishment Year : 1968



NUTAN MAHAVIDYALAYA

Sailu. Dist. Parbhani.

(Affiliated to Swami Ramanand Teerth Marathwada University, Nanded.)
(Best College Award 2008-09)



COLLEGE HAND-BOOK

2022-2023





Dr. Chandak madam giving a lecture on 'Eradication of Child Marriages' to the students



Dr. Mahendra Shinde and the Prerna team receiving first Prize for 'Prerna' (2020-21) in the University Programme.



Dr.R.R. Bainwad being felicitated by University authorities for receiving 'Best NSS Programme officer' award in a grand ceremony...



Dr. Mahendra Shinde taking charge of Principal (I/C) from Dr. Sharad Kulkarni



NUTAN VIDYALAYA SHIKSHAN SANSTHA'S

NUTAN MAHAVIDYALAYA, SAILU DIST. PARBHANI

(Affiliated to Swami Ramanand Teerth Marathwada University, Nanded.)

(Best College Award 2008-09)

NAAC Accredited B+ Grade (Third Cycle)

Sanstha Establishment Year: 1939

College Establishment Year : 1968

Under-Graduate Courses in ARTS, COMMERCE, SCIENCE

Bachelor of Computer Application (BCA)

Post-Graduate Course in Marathi and History

Research center in the History Department

**Yeshwantrao Chavan Maharashtra Open University, Centre, Nasik
SRTMU Nanded- Centre for Distance Education (Post Graduation)**

PRINCIPAL

Nutan Mahavidyalaya
Sailu, Dist. Parbhani

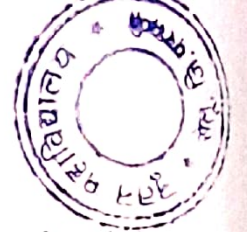
Website : www.nutanmahavidyalaya.com,

Email-principalnutan@rediffmail.com

COLLEGE HAND-BOOK 2022-2023



PRINCIPAL
Nutan Mahavidyalaya
Sailu, Dist. Parbhani



Aims and objectives of the Sanstha

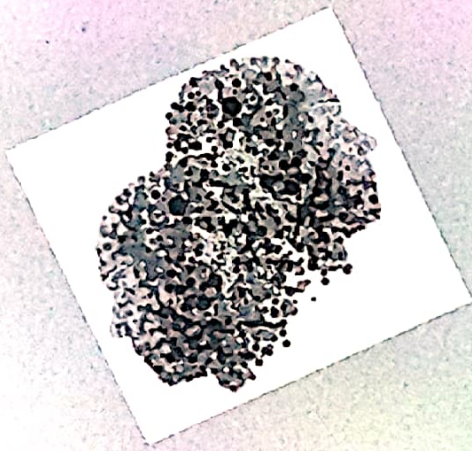
- 1) To develop democratic values, national integration and secularism amongst students through the hierarchy of education for all both girls and boys at higher level study.
- 2) To develop the physical resources with ICT enables classrooms and seminar halls for the promotion of research and teaching-learning method.
- 3) To produce learned human resources citizen of India.
- 4) To inculcate social, moral and spiritual values amongst students.
- 5) To instil them with required set of skill as sgricultural base, entrepreneur, technical etc. for financial independency.
- 6) Development in acquisition of language skill in Marathi as a state language, Hindi as a national language and English as an international language.

Vision

The vision of the college encompasses making quality education available to all the sections of the society, imbining in the students the community spirit, the sense of secularism and democratic and institutional responsibility, inculcating in the students the values enshrined in the constitution of India so that they get enabled and well equipped to serve the humanity with the best of their abilities.

Mission

- 1) To provide the best possible academic environment to the students.
- 2) To provide the students with the best of ICT enabled learning facilities.
- 3) To make the students professionally employable with the world class skills.
- 4) To help them discover their latent talents and develop them.
- 5) To undertake quality research work, consultancy and community work.
- 6) To prepare the students to be able to live with other people with diverse socio cultural backgrounds peacefully.



PRINCIPAL'S ADDRESS

Core Values of the College "ACTION—NMS"

- A** Adopting Teaching Learning Process with New Trends.
- C** Collaboration with other Educational Institutions, Industries and Social Organizations.
- T** To Produce Learned People.
- I** Innovation Spirit Development Amongst Students
- O** Opening the Door of Career Opportunities for the students and Neighborhood Locality.
- N** Nurture Integrity, Creativity and Academic Freedom

- N** Nurturing HUMAN Values Amongst Students.
- M** Making Sure of Overall Development of Students
- S** Strengthen the Students in Technological Skills and Up-gradations.

Hello,

It's my pleasure to welcome you to the college which has a magnificent history of educational excellence and more importantly the pioneering educational institute in the region. Founded by the local freedom fighters inspired by the legendary Freedom Struggle leaders like Swami Ramanand Teerth and run by mostly the teachers, the college takes on itself the responsibility to give the best to the students so that they can equip themselves to serve the nation in whatever field they choose to work. Apart from the tried and tested work culture and ethics, the college has an able and dedicated galaxy of teachers, a rich library, a huge playground, the green and well-


PRINCIPAL

Nutan Mahavidyalaya
Sailu, Dist. Parbhani



Nutan Mahavidyalaya, Sailu.

kept campus and varied curricular and extracurricular programmes that run round the year.

Last two years were the horrendous time the world went through on account of the Covid pandemic. Everything in public life was stalled and the world came to a standstill. The educational sphere has suffered a major setback and the student community was the direct sufferer. The fear of death loomed large over all of us. Fortunately, things seem to be changing for the good and the life around is returning to normalcy. Hope everything will be fine in this academic year and the years to come as well. Still we have to be on guard and follow the Covid related rules and regulations devised by various authorities and the government time to time.

I hope you will find the best in the field here on the Nutan campus and would make the most of it in shaping your careers and equipping yourself to be able to serve our beloved nation and the humanity.

Best of luck!

I/c. Principal
Dr. Mahendrakumar S. Shinde

PRINCIPAL

Nutan Mahavidyalaya
Sailu, Dist. Parbhani.



SALIENT FEATURES OF NUTAN MAHAVIDYALAYA

- Excellent Academic Result
- Felicitations of meritorious students.
- Student-Centered teaching learning environment
- Remedial coaching classes.
- Multiple Teaching-learning methodology including E-techniques.
- Well equipped Laboratories with internet connectivity.
- N.R.C Center.
- Library facilities Well equipped Reading room.
- Special Ladies Common Rooms.
- Latest High-Tech computer lab with updated hardware and software.
- Wi-Fi connectivity in the Campus.
- Accredited by NAAC with "B+" Grade (Third Cycle)
- Experienced and Well Qualified Teaching Staff
- Preparation of Competitive Examination
- Organization of State / National level seminars / workshops / Conferences for continuous academic Development.
- Emphasis on giving Exposure to various extra-curricular and Cultural Activities for the development of students.
- "PRERANA"- an annual College magazine works as a platform for students to express their creativity.
- Campus with well developed Botanical & Medicinal Gardens.
- Special Sport facilities with Excellent Playground & Gymnasium.
- PROF. GOVIND LATPATE COMMUNICATION & PERSONLITY DEVLOPMENT LAB
(For the Development of communication skills of the student)
- Spelling training on "Training & Placement" run in collobration with Bajaj Finserve.



COLLEGE PROFILE


PRINCIPAL

Nutan Mahavidyalaya
Sailu, Dist. Parbhani

ABOUT THE COLLEGE :

In the year 1968, **Nutan Mahavidyalaya**, came into existence. It is one of the leading institutes of the well-known **Nutan Vidyalaya Shikshan Sanstha**, which was established in 1939 by the Freedom Fighters of Sailu, with the inspiration and motivation of Swami Ramanand Teerth. Nutan Vidyalaya Shikshan Sanstha has been a pioneer institution which imparts quality education right from pre-primary level (KG) to post-graduate (PG) in the Marathwada Region of Maharashtra. Recently, Nutan Vidyalaya Shikshan Sanstha has celebrated its Platinum Jubilee Year (The 75 Years of glorious achievements).

The College has been Accredited for Third Cycle by NAAC with "B+" Grade during the academic year 2018-19. The college has excellent, highly qualified & dedicated faculties with good infrastructure, disciplines and competent administration with the track of good results in all the disciplines. The college offers number of add-on-courses to increase the employability of the students. The college is implementing the healthy and innovative practices like Parents Association, Alumni Association, Earn and Learn scheme, Career Guidance and Counseling Cell, Competitive Examination Classes (MPSC/UPSC), Remedial Coaching, etc. which help students to develop their personality in all aspects. The NSS unit of the College develops a sense of civilization among the students. Gunvatta Sanman (Felicitation of meritorious students) is a special feature of the college.

With the help of Alumni Association and grants from the UGC, the college has developed different labs such as Computer Labs, Language Lab and Mathematics Lab, Network Resource Center, etc. which have certainly resulted in the increase of the techno-skills among the students and staff.

RECOGNITION AND AFFILIATION:

The college was established in June, 1968. It was affiliated to the then Marathwada University, Aurangabad up to academic year 1994-95. Since the academic year 1995-1996 the college is affiliated to newly formed Swami Ramanand Teerth Marathwada University, Nanded. The college has been included in U/s 2(F) by the University Grants Commission, New Delhi, Since 1971.

College at Glance:

Year of Establishment	1968	Faculty With M.Phil	02
No. of U.G. Program	09	Research Guide	07
No. of P.G. Program	02	Research Scholars	12
Add on Courses	11	Research Paper published	30
Distance Education Center	02	by Staff member (21-22)	35
Faculty Members	19	Laboratories	08
Faculty With Ph.D.	14	Books	66,890
NET/SET Qualified Faculty	06	Journals / Periodicals	48
Research Center of History		No. of Computer Lab	04

PRINCIPAL

Nutan Mahavidyalaya
Sailu, Dist. Parbhani,



I. PHYSICAL FACILITIES FOR STUDENTS :

1) LIBRARY:

Central Library of the College is a treasure house of information and knowledge. Along with well stocked books with digitalization and a well developed Reading Room facility for students. The College Library is enriched with more than 65,000 books, number of Encyclopedias, 24 Periodicals, and 24 Newspapers. The College Library is partly automated.

Use of New Technologies in the Library:

- A. SOUL Software is being used in the College Library.
- B. Online Public Access Catalogue (OPAC) facility is provided to the students.
- C. The college Library is a registered member of INFLIBNET, Ahmadabad for the subscription of 'N-LIST' online access facility. With all these, new technical faculties students can access research journals and e-books. The library provides membership to the ex-students, ex-staff members and senior citizens of the Selu town. The "Book-Bank" scheme is also implemented for students. The College Library arranges exhibition of books on the special events. The College Library runs under the guidance of Library Advisory Committee. The committee meets several times in each academic year to upgrade & update the collections in the library as well as to improve the Library facilities.

LIBRARY RULES:

- 1) Books issued on borrower's card can be retained only for seven days.
- 2) References and rare books are not issued; however, they can be made available in the library only for the reference work.
- 3) Per day book Fine of Rs.2/- is charged if a book is not returned before due date.
- 4) Readers are responsible for any kind of damage or loss of reading material.
- 5) Mobile phones are strictly banned in the Reading Room and Library.

2) READING ROOM:

A well furnished and maintained Reading Room could well be said to be the most distinguished feature of the College. One Hundred (100) cubicles are there for the students. Books, Magazines, Competitive Exams' (like MPSC/UPSC/Staff-Selection etc.) Study Materials and Question Paper Sets of University Exams are made available to the students. The electricity is provided without power cuts.

READING ROOM RULES:

- 1) Cellphones are strictly banned in the Reading Room.
- 2) Identity card is compulsory for the use of reading room.

PRINCIPAL

Nutan Mahavidyalaya
Sailu, Dist. Parbhani



- 3) Students can borrow magazines, newspapers and question paper sets on producing identity cards which are to be used in the Reading Room only.
- 4) Silence should be maintained strictly in the reading room.
- 5) Any act of indiscipline, misbehavior will be taken as a serious offence.

3) NUTAN SANSTHA'S LATE SHRIRAMJI BHANGDIYA BOYS HOSTEL:

The College runs a developed and maintained 'Late Shriramji Bhangdiya Boys' Hostel in the College Campus. It provides facilities like furniture, electricity, UPS, hot bath water, drinking water etc. for students at concessional rates. The hostel committee consists of teachers and non-teaching staff. Admissions are given to needy students. Intake capacity of the hostel is 80 students. The Hostel is maintained under the guidance of Dr. K.K. Kadam –Director of Physical Edu. (mobile no.9422750370).

4) WOMEN'S HOSTEL:

The college has made available a major facility for the girl students in the form of Women's Hostel with the help of financial assistance of the University Grants Commission to increase numbers of girl students. The intake capacity of hostel is around 50 Students. The Hostel has amenities like attached W.C., hot water, water purifier, canteen with mess, inverter, library, and sports facilities etc. The women's hostel is maintained under the guidance of Mrs.Dr. A.C. Patki - HOD Hindi (mobile no.9834213699)

5) CANTEEN :

Within the college premises canteen provides hygienic food and drinks at affordable prices.

6) LABORATORIES :

The college has established 08 laboratories which are spacious and well equipped and modernized laboratories for all science departments with computers and internet facility.

The College has BCA Computer Lab, the total number of computers in these labs are 100. Separate computers are provided to each and every Department with internet connection. BCA computer lab is established with the financial support of the alumni association during the academic year 2008-09.

7) ICT ROOMS :

Keeping in view, the need of new technical use and its importance, college has made availability of Wi-fi. In the whole campus with 08 ICT Rooms as well as movable projectors for all classroom as per requirements are available.

8) LANGUAGE LAB:

Taking into consideration, the need of English Language in this global era, English language Lab is established in the college. The lab has around 15 computers with the latest configuration and rich language, the latest soft-wares (Globrena and one more



special software from MSBTE) with internet connectivity. It is aimed to impart to the students in the area of language and literature. The students are encouraged to take active interest through the use of various soft-wares and audio visual aids. Acquiring linguistic competence in English is a very necessary step towards professional excellence. Students are presenting papers at National Level conferences.

9) SPORTS DEPARTMENT & GYMNASIUM:

The Sports Department has various sectors as *indoor and outdoor games, Health care center, Gymnasium and Yoga and Meditation center.*

Sufficient sports materials are made available to the students. The college has a well-equipped Gymnasium room with all kinds of advanced machines and several equipments. The sports department encourages participating students in various tournaments at all levels competition such as tehsil, district, university, state and national. The sports department has good track record of winning prizes in several competitions.

10) NATIONAL SERVICE SCHEME:

In the academic year 1970-71, The National Service Scheme was introduced in the college. Since 1970-71, the NSS unit has been one of the most active units in the Marathwada region. The NSS unit organizes various regular programs for all-round development of the students and inculcate the value of selfless service for Nation among the volunteers. During each academic Year, the unit arranges a special camp on the theme defined by the affiliated University, in the nearby village. NSS gives emphasis on service, dedication and discipline.

The regular and special programmers of NSS have always been oriented towards social responsibility, nationality, citizenship, dignity of labor, community development activities and participation.

11) STUDENTS FORUM:

The college has established a Student Forum to organize the students' activities such as Youth Festival, College Annual Gathering and promote students in various academic and cultural activities. The students' forum celebrates all the important national festivals, special days etc. specified by the university.

12) CAREER GUIDANCE AND COUNSELING CELL:

The College has established the Career Guidance and Counseling Cell under UGC XI plan for the professional up gradation of the students. This cell arranges lectures on various topics and career oriented subjects focusing on the overall development of students' personality. Students are made aware for the different avenues in the world of work. Efforts are made to invite the resource persons from all walks of life. That includes expertise, specialists, and distinguished scholars from diverse fields. The college has collaboration with Higher and Technical Education run by state Govt. under which 365 days lectures are conducted to develop business skills.

Sailu Dist. Parbhani
2022-2023

PRINCIPAL

**Nutan Mahavidyalaya
Sailu, Dist. Parbhani**



13) ENTRY IN SERVICES FORUM:

The Entry in Services Forum regularly conducts classes for the preparation of various competitive examinations such as UPSC, MPSC, Banking, LIC, etc. The forum arranges regular lectures which helps the students to compete in various competitive examinations. Under UGC XI Plan & XII Plan the college has set up a separate cell of coaching classes to enter these services. The cell is now with adequate facilities and would remain so in the future. The college has collaboration with career kotta as scheme of Higher and Technical Education Information Technology Maharashtra State under this scheme 3 Years lectures by IAS, IPS, IRS, IFS are conducted.

14) REMEDIAL COACHING CLASSES:

The college has made a provision of Remedial Coaching Classes to provide extra coaching to the slow learner to improve their learning apart from regular classes. The cell is well equipped and provides study material, books to the students.

15) SEMINARS, CONFERENCES AND WORKSHOPS:

The college encourages faculty and students to attend seminars, conferences, workshops and other social deliberations to update themselves in their respective disciplines. In this context National, State level and regional seminars, conferences and workshops are arranged.

16) STUDENTS GRIEVANCES REDRESSAL CELL:

The college has setup a Students Grievances Redressal Cell. The Principal of the college is the chairman of Students Grievances Redressal Cell. The grievances box is maintained by the college where students have to drop their grievances. The box is regularly opened and checked. The students can even make their complaints, suggestions, demands etc. directly to the principal orally or in written form. They can also use the college e-mail ID i.e. principalnutan@rediffmail.com or principals personal email id i.e. dr.mahendra.shinde@gmail.com. All grievances are scrutinized and necessary actions/steps are always taken by the concerned authorities.

17) EARN AND LEARN SCHEME:

The college has implemented Earn and Learn Scheme, in order to help the hard working and intelligent but economically backward students. It is with the special aim to make themselves reliant learners, hence, they can earn money with the jobs like maintaining college campus, working in the library and the office etc.

18) Training for Recruitment in Police Bharti:

The college has approved center for Recruitment in Police Department Under the state Government Scheme.

Principal

**Nutan Mahavidyalaya
Sailu, Dist. Parbhani**



19) IQAC:

In pursuance of the National Action Plan of the National Assessment and Accreditation Council (NAAC), Bangalore, for the evaluation of performance, assessment and accreditation and quality up gradation of institutions for the higher education, the NAAC proposes that every accredited institution should establish an Internal Quality Assurance Cell (IQAC) as a post-accreditation quality sustenance measure. Since, quality enhancement is a continuous process, the IQAC has become an integral part of the institution's system and work towards realization of the goals of quality enhancement and sustenance.

The prime task of the IQAC is to develop a system of conscious, consistent and catalytic improvement in the performance of institutions. The IQAC has made a significant and meaningful contribution in the post-accreditation phase of institution. During the post-accreditation period, the IQAC channelizes the efforts and measures of an institution towards academic excellence.

Training and placement cell. The college has well equipped and established training and placement cell. It has MOU with Bajaj Finanserve under with certificate course in Banking Finance and Insurance is conducted. It conducts job fairs and job training In the last academic year who completed this course. Under the MOU with Forth Dimension Aurangabad, in Incubation center startup training is also provided in the college.

20) AWARDS AND HONOURS TO THE MERITORIOUS STUDENTS:

Every year, the meritorious students are felicitated by giving awards with the support of well wishers of the institution, former staff members and teachers of the college. The list of these cash prizes is given on the last page of the hand-book.

21) ALUMNI AND PARENTS' ASSOCIATION:

The college has built a strong Alumni Association. The representatives of Alumni actively participate in the preparation of perspective plan of the college. They also contribute financially to the college to develop necessary infrastructure and support facilities for the students. Their opinions and feedback is given due consideration during the plan regarding the academic activities. The college has established the parent-teachers association too. Meeting of the parent-teachers association are being held regularly in the College. Their feedback is also taken into consideration while planning the academic activities.

22) The organization of Study Tour for the students.

23) Established PROF. GOVIND LATPATE COMMUNICATION & PERSONLITY DEVLOPMENT LAB

for following objectives

1. To provide platform for the development of confidence in Speaking English.
2. To enhance English language skills, communication skills.
3. To provide the platform for the practice of soft skills and acquisition Personality Development Techniques
4. To emphasize the need of English in the technical and global world.
5. To prepare students for interview and future job environments.

PRINCIPAL
Nutan Mahavidyalaya
Sailu, Dist. Parbhani



Nutan Mahavidyalaya, Sailu.



ACADMIC PROGRAMMES :

Bachelor of Arts :

Eligibility : The students who has passed HSC / HSVC examination OR equivalent examination from the recognized board is eligible to get admission.

Intake Capacity : 120 Students for First Year.

Subjects and Subject Groups Available in the College

Compulsory Subject : English

Second Lang. : Marathi/ Hindi/ Sanskrit

Optional Subject :

Group I : Marathi or Economics

Group II : English

Group III : Hindi or Political Science

Group IV : History

Note :-

- 1) Second language and optinal language can't be one. They should be different.
- 2) At least one language is must as one of the three optional subjects.
- 3) Not more than 50% of the total students will be allowed for one optional subject.


PRINCIPAL

**Nutan Mahavidyalaya
Sailu, Dist. Parbhani**



Bachelor of Commerce: The student who has passed HSC or HSVC examination from the recognized board is eligible to get admission in the first year of B. Com course. Intake capacity of B. Com first year is **(120 Granted & 120 Non Granted)**. Subjects for B.Com. Course are as follows:

Class	Compulsory	S.L.		Optional subject
B.com I year	English	Second Lang Hindi / Marathi or Sanskrit	Semester I & II	Financial Accounting, Business Communication, Business Economics, Fundamental Statistics & Maths, Elective Paper [Any One] Computer for Business & Tally, Entrepreneurship Salesmanship, Office Management
B.Com. II year	English	As per the first year	Semester -III	Corporate A/c, Cost A/c, Principles of Business Mgt, Mercantile Law, Income Tax-I, Sec I Management skill, Banking services skills, Basic Accounting skills, E-Commerce -I, Six sigma Marketing and sales.
			Semester -IV	Adv. Corporate A/c, Adv. Cost A/c, Business Mgt. , Corporate Law, Income Tax-II, Sec II Business Marketing, Financial Markets, E-Commerce-II, Retail Business A/c, Supply Chain Mgt. SEC Should be Evaluated of Annually.
B.Com. III Year	Environmental Study		Semester -V	Advance Accounting-I, Mangt. A/c-I, Auditing-I, H.R.M., Training & Project Work, Opt. Any One Subject as Generic Elective of the following 1 Indian Economy-I, Rural Mangt-I, 3 Labour Laws-1, 4 Travel & Tourism- I & 5 The Right to Information Act-2005-I. Opt. Any One Skill Enhancement Course-III (SEC-III) SEC-III.1 Self-Employment-II, SEC-III.2 Tax Consultancy, SEC-III.3 Intellectual Property Right-II, SEC-III.4 Accounting & Tally SEC-III.5 Mutual Fund Distribution.
			Semester -VI	Advance Accounting-II, Mangt. A/c-II, Auditing-II, Marketing Mangt.-II, Training & Project Work, Opt. Any One Subject as Generic Elective of the following 1. Indian Economy-II, 2 Rural Mangt-II, 3 Labour Laws-II, 4 Travel & Tourism- II, 5 The Right to Information Act-2005-II. Opt. Any One Skill Enhancement Course-IV (SEC-IV) 1 Self-Employment-II, 2 Tax Consultancy, 3 Intellectual Property Right-II, 4 A/c & Auditing Practices, 5 Mutual Fund Distribution.


PRINCIPAL
Nutan Mahavidyalaya
Sailu, Dist. Parbhani

◆ Since 2016-17 college has mandatory to run the CBCS pattern. According to it, one skill enhancement course (SEC) is compulsory for semester IIIrd to semester VIth.



Nutan Mahavidyalaya, Sailu.



Bachelor of Science:

The student who has passed HSC Examination with Science subject from the recognized board is eligible to get admission for the First Year of B.Sc. degree course. The college offers subjects as Computer, Micro-biology on non-grant basis. Intake capacity of B.Sc. first year is 120.

Students have to opt any three subjects from the groups given below:

Group A: Physics, Mathematics, Chemistry, Computer Science

Group B: Botany, Zoology, Chemistry, Micro-biology

Compulsory : English
Second Lang. : Marathi / Hindi / Sanskrit

Subject Combinations

Option A : Physics, Chemistry, Mathematics
Option B : Physics, Mathematics, Computer Science
Option C : Physics, Chemistry, Computer Science,
Option D : Chemistry, Mathematics, Computer Science
Option E : Botany, Zoology, Chemistry
Option F : Botany, Chemistry, Microbiology
Option G : Botany, Zoology, Microbiology
Option H : Zoology, Chemistry, Microbiology

- ◆ The subjects or Group chosen by candidate in first year must remain same in second & third year.
- ◆ Since 2016-17 college has mandatory to run the CBCS pattern. According to it, one skill enhancement course (SEC) is compulsory for **semester IIIrd to semester VIth**.
- ◆ For B.Sc. third year Environment study is compulsory paper for semester Vth.


PRINCIPAL

**Nutan Mahavidyalaya
Sailu, Dist. Parbhani**



Bachelor of Computer Application:

The college has started Bachelor of Computer Application course since the academic year 2008-2009. It is a non-grant course run by the college. If the Government does not pay any fees and maintenance allowance to the GOI students, the college will treat such GOI students as open category students. They are required to pay full fees. **However, their fees will be refunded if received from the Government. There is no EBC or PTC scholarship for BCA Course. The student who has passed HSC/ HSVC Examination is eligible to take admission in BCA.**

BCA : First Year

SEMESTER 1:

- BCA-101 Fundamentals of Computer Science and Information Technology
- BCA-102 Office Automation
- BCA-103 Programming in C

Elective Subject


- BCA-104 A Element of Statistics **OR**
- BCA-104 B Mathematical Technique In Computer Science (MTCS)

Open Elective

- BCA-105 A University recognized MOOC (NPTEL / SWAYAM / others) OR Intra / Inter Departmental courses **OR**
- BCA-105 B Applied English OR Business Communication

Lab / Practical

- BCA-106 C Programming
- BCA-107 Office Automation


PRINCIPAL
Nutan Mahavidyalaya
Sailu, Dist. Parbhani

BCA Second Year SEMESTER 3:

- BCA.S3.1 Logical Reasoning
- BCA.S3.2 Object Oriented Prog. Using C++
- BCA.S3.3 Database Structure
- BCA.S3.4 System Analysis and Design
- BCA.S3.5 Elective
 - i. Multimedia & Applicants
 - ii. Data Communication
 - iii. E-Commerce Technologies & Cyber Security.

SEMESTER 4:

- BCA.S4.1 Numerical Aptitude
- BCA.S4.2 Java Programming
- BCA.S4.3 Relational Database Mangt. System
- BCA.S4.4 Operating System
- BCA.S4.5 Elective
 - i. Computer Graphics.
 - ii. Computer Architecture & Microprocessor
 - iii. Event Driven Programming.

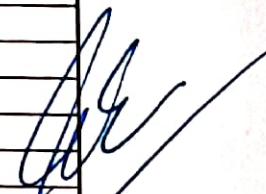
BCA.S3.5 Elective

- i. Multimedia & Applicants
- ii. Data Communication
- E-Commerce Technologies & Cyber Security.



**BCA Third Year Proposed Syllabus
w.e.f. 2021 - 2022**

BCA III Year SEM - V			
Course category	Subject code	Subjects	Credits
Core Course	BCA-501	System Analysis and Design (SAAD)	04
Core Course	BCA-502	Web Development and PHP Programming	04
Core Course	BCA-503	Mobile Application Development	04
Chose any one from the below Elective courses			
Elective	BCA-504-A	Computer Network	04
Subject	BCA-504-B	Cloud Computing	04
Chose any one Open Elective courses			
Open	BCA-505-A	University recognized MOOC (NPTEL/SWAYAM / others) OR Intra /Inter Departmental Courses OR	04
	BCA-505-B	Linus Operating System	04
Lab/	BCA-506	Lap-PHP Programming	02
Practical	BCA-507	Lab- Mobile Application Development	02
Total Credit			24
BCA III Year SEM - VI			
Course category	Subject code	Subjects	Credits
Core Course	BCA-601	Software Engineering	04
Core Course	BCA-602	Python	04
Core Course	BCA-603	Project Development activity and Seminar	04
Chose any one from the below Elective courses			
Elective	BCA-604-A	Windows Programming	04
Subject	BCA-604-B	Digital Image Processing	04
Chose any one Open Elective courses			
Open	BCA-605-A	University recognized MOOC (NPTEL/SWAYAM / others) OR Intra /Inter Departmental Courses OR	04
	BCA-605-B	Cyber Security	04
Lab/	BCA-606	Lap-Pythom	02
Practical	BCA-607	Lab- Windows Programming and DIP	02
Total Credit			24


PRINCIPAL
 Nutan Mahavidyalaya
 Dist. Parbhani



Post-Graduate Course in Marathi and History :-

The college has started Post-Graduate Courses in Marathi and History on **Non-Grant Basis**.
The following papers are offered at Post Graduate courses:

M.A. (Marathi)

सत्र पहिले

- अभ्यासपत्रिका १(अनिवार्य) - स्वातंत्र्य काळातील मराठी वाङ्मयाचा इतिहास (इ.स. १८१८ ते इ.स. १९४७)
अभ्यासपत्रिका २(अनिवार्य) - ऐतिहासिक भाषाविज्ञान
अभ्यासपत्रिका ३.१ (ऐच्छिक) वाङ्मयप्रकारांचा अभ्यास : कथा आणि कादंबरी किंवा
अभ्यासपत्रिका ३.२ (ऐच्छिक) मराठी भाषा आणि प्रसारमाध्यमे
अभ्यासपत्रिका ४.१ (ऐच्छिक) लोकप्रिय साहित्य किंवा
अभ्यासपत्रिका ४.२ (ऐच्छिक) भाषांतरविद्या

सत्र दुसरे

- अभ्यासपत्रिका ५ (अनिवार्य) - स्वातंत्र्योत्तर काळातील मराठी वाङ्मयाचा इतिहास (इ.स. १९४७ ते इ.स. २०१०)
अभ्यासपत्रिका ६ (अनिवार्य) - वर्णनात्मक भाषाविज्ञान
अभ्यासपत्रिका ७.१ (ऐच्छिक) वाङ्मयप्रकारांचा अभ्यास : कविता आणि नाटक किंवा
अभ्यासपत्रिका ७.२ (ऐच्छिक) भाषा व्यवहार आणि उपयोजन
अभ्यासपत्रिका ८.१ (ऐच्छिक) सामाजिक दृष्टिकोनातून साहित्याचा अभ्यास किंवा
अभ्यासपत्रिका ८.२ (ऐच्छिक) मराठी बाल-कुमार साहित्य

M.A. (History)

Semester First & Second

- Paper I & V : Historiography
Paper II & VI : India After Independence
Paper III & VII : History of Modern Marathwada
Paper IV & VIII : Archaeology

Submission of Project & Internal Marks:

There will be the submission of Project & Assignments for all subjects before the 15 days of examination. Date of submission will be displayed on the notice board (as per Subject).

सत्र तिसरे

- अभ्यासपत्रिका :IX - साहित्य समीक्षाशास्त्र
अभ्यासपत्रिका :X - सामाजिक भाषाविज्ञान
अभ्यासपत्रिका :XI- साठोत्तरी वाङ्मयीन प्रवाह किंवा
अभ्यासपत्रिका : XI- लोकसंस्कृति व मराठी लोकसाहित्य
अभ्यासपत्रिका : XII -एका लेखकाचा अभ्यास- मध्ययुगीन - संत तुकाराम
किंवा अभ्यासपत्रिका :XII- एका लेखकाचा अभ्यास- आधुनिक - नागनाथ कौतापत्ले
सत्र चौथे
अभ्यासपत्रिका :XIII - समीक्षापध्दती आणि साहित्यसंशोधन
अभ्यासपत्रिका :XIV - मध्ययुगीन मराठी वाङ्मयाची सांस्कृतिक पार्श्वभूमी
अभ्यासपत्रिका :XV - मराठी वैचारिक साहित्य
किंवा अभ्यासपत्रिका :XV - तौलनिक साहित्य
अभ्यासपत्रिका :X - प्रादेशिक साहित्य
किंवा अभ्यासपत्रिका :XIV - अमराठी प्रांतातील मराठी साहित्य
अभ्यासपत्रिका :XVII - प्रकल्पलेखन

Semester Third & Fourth

- Paper IX & XIII : Women's in Indian History
Paper X & XIV: History of Modern Maharashtra
Paper XI & XV: History of Modern World
Paper XII & XVI : Tourism

PRINCIPAL

Nutan Mahavidyalaya
Sailu, Dist. Parbhani



VARIOUS TYPES OF SHOLARSHIPS : RULE AND TERMS

GOI FOR BACKWARD CLASS STUDENTS : RULE AND TERMS Year 2022-23

- 1) Students, living in approved private hostel, will get annual residence and food allowances. For this, it is necessary to update online certificate of Hostel Superintendent/ rector.
- 2) It is necessary to attach check list along with Court Fee Stamp of Rs.5/- or Rs.10/-.
- 3) It is essential to attach all documents as per Check-list. (Check-list and Bandh-patra will be available in Xerox Room of college)
Not
- A) Before admission, One should collect required certificates or documents for GOI and various types of scholarships from concerned office. If any problem/ difficulty is faced, **Communicate or contact with office Sr. Clerk & Nodel Officer Shri.Vilas Salve.**
- B) GOI and various scholarships holder students should submit online print/ hard copy along with required documents in time in office. Those students, who will not submit hard copy Online print in stipulated time, will not get scholarship. Complete fees will be collected from them. Besides, it should be noted that TC will not be issued.
- C) Scholarship amount will not deposited in account unless students (GOI holders) click on 'Redeem'.
(Log in : Form should be filled in given time on website Online :- MAHADBT, Social welfare Deptt. Maharashtra Govt.)
Hard Copy of Application along with list of required documents:
 - 1) Student's original caste certificate along with true/ attested copy.
 - 2) Father's Original Income Certificate (2021-22) (Signed by Hon. Tahsildar)
 - 3) Income Certificate signed by Hon. Nayab Tahsildar.
 - 4) Residential certificate (Signed by hon. Tahsildar)
 - 5) If father is not alive, his death certificate and mother's income certificate should be attached.
(In the absence of parents, caretaker parents' income will be considered)
 - 6) Gap certificate is essential, if applicable.
 - 7) True copy of Mark Memo and T.C.
 - 8) Students, living in hostel should submit Superintendent's certificate. If He has taken room on rent basis, He should submit house owner's receipt is necessary.
 - 9) In case of change in college, sanction number from previous college is necessary.
 - 10) Student's 75% attendance in college is compulsory.

PRINCIPAL

Nutan Mahavidyalaya
Sailu Dist. Parbhani



11) Income limit for scholarship according to students category will be as follows

SC	- Rs.2,50,000/-
ST	- Rs.2,50,000/-
SBC	- Rs.1,00,000/-
DNT/JNT/NT	- Rs.1,00,000/-
OBC	- Rs.1,00,000/-

- 12) It is necessary to attach Admission Receipt to scholarship form for all students (boys/ girls).
- 13) For all scholarships, it is necessary to write accurate, own bank account.
It should be noted that college will not be responsible for wrong bank account statement.
- 14) Zero Balance account in Nationalized Bank or Post office should be opened.
- 15) If previous account Nationalized Bank or Post office is activated no need of opening new/ second account.
- 16) It is essential to link Aadhar card with Nationalized Bank account.
- 17) The concerned should take note of it that, students, having not submitted hard copy along with required documents, in office, in time, will be responsible for economic loss, college will not take its responsibility.
- 18) It is Govts directive that, other scholarship holder students should be guided about solving difficulties about scholarship by college **Nodal Officers Vice-Principal, Dr. Uttam Rathod, Vice-Principal, Dr. Pravin Kharat, Dr.Kirti Niralwad, Dr.Ramesh Bainwad, Dr.Prakash Kanthale, Sr Clark & Nodel Officer Shri.Vilas Salve and boys and girls in 'Maitri' Organisation.**
- 19) If, there are difficulties about scholarship, first meet hon. Nodel officer, hon. Vice-Principal and then hon. Principal.
- 20) Concerned students should take note of it that Social Welfare office deposits exam fees in account of scholarship holder students. So, scholarship holder students should pay University exam fees in cash in college.

'GOI Freeship'

(Login: e-scholarship, Social Welfare department, Maharashtra Govt.' Online form should be filled on this website)

- 1) Freeship will be available for only one course within one year.
- 2) Parent's previous year income certificate (2021-22) should be signed by ho. Tahsildar.
- 3) Residential certificate signed by ho. Tahsildar.
- 4) Zero Balance account in Nationalized Bank or Post office should be opened.
- 5) If previous account in Nationalized Bank or Post office is activated no need of opening new/ second account.
- 6) It is essential to link Aadhar card with Nationalized Bank account.
- 7) Caste certificate (True copy).

PRINCIPAL
Nutan Mahavidyalaya
Sailu, Dist. Parbhani



Nutan Mahavidyalaya, Sailu.



- 8) T.C. and Mark Memo (True copy)
- 9) It is necessary to attach Admission Receipt to scholarship form for all students (boys/ girls).
- 10) In case of change in college, sanction number from previous college is necessary.
- 11) The concerned should take note of it that, students, having not submitted hard copy along with required documents, in office, in time, will be responsible for economic loss, college will not take its responsibility.
- 12) Freeship Income limit is only 8,00,000/-. (There is no income limit for SC/ ST students.)

Various types of Scholarships: Rule and Terms

Following scholarships form should be filled online on **MAHADBT & NSP Portal** :

The eligible students can get the following scholarships :

- 1) State Minority scholarship. DBT & NSP Portal.
 - 2) State Government Open Merit Scholarship.
 - 3) Education Concession to the children of Ex-servicemen, Freedom Fighter.
 - 4) Scholarship to meritorious students possessing Mathematics/ Physics.
 - 5) Centre sector Scholarship.
 - 6) Wards of the Primary/ Secondary Teachers should submit offline freeship form. The necessary documents for them are as follows.
 - 7) Eklavya Scholarship .
 - 8) Physically Handicapped Scholarship
-
- A) Admission Receipt. (True copy)
 - B) Marks Memo. (True copy)
 - C) Transfer certificate (T.C.) (True copy)
 - D) Ration card. (True copy)
 - E) Annual Salary Certificate. (Original)
 - F) Family Declaration Certificate.(Original)

PRINCIPAL

Nutan Mahavidyalaya
Sailu, Dist. Parbhani



Self-Finance Courses:

COURSE NAME CERTIFICATION COURSES	Fees	DURATION
Dress Designing	500	Three Months
Sculpturing	500	Three Months
Weaving	500	Three Months
Photography	500	Three Months
Music	500	Three Months
DTP	500	Three Months
Dramatics	500	Three Months
Hardware and Networking	500	Three Months
Tally	500	Three Months
Spoken English	500	Three Months
Certificate programme in Banking, Finance and Insurance in collaboration with Bajaj Finserv for third year appear student or passout student	2000	135 hours

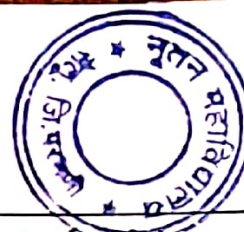
Academic Calender of 2022-23 will be as per the guidelines of the governments & University.

PRINCIPAL

Nutan Mahavidyalaya
Sailu, Dist. Parbhani



Fees charts for U.G.Classes i.e. Arts										
Sr.No.	Particulars	BAFY			BASY			BATY		
		Paying	EBC	GOI	Paying	EBC	GOI	Paying	EBC	GOI
1	Admission fees	50	50	0	50	50	0	50	50	0
2	Tuition fees	1100	0	0	1100	0	0	1100	0	0
3	Lib fees	150	150	0	0	0	0	0	0	0
4	Lab fees	0	0	0	0	0	0	0	0	0
5	Registration fees	0	0	0	0	0	0	0	0	0
6	Students aid fund fees	10	10	0	10	10	0	10	10	0
7	Games fees (GYM)	75	75	0	75	75	0	75	75	0
8	Gathering fees	70	70	70	70	70	70	70	70	70
9	Magazine fees	50	50	0	50	50	0	50	50	0
10	Students forum fees (council)	20	20	0	20	20	0	20	20	0
11	Identity card fees	15	15	0	15	15	0	15	15	0
12	Library card fees	25	25	25	25	25	25	25	25	25
13	Eligibility fees	100	100	0	0	0	0	0	0	0
14	Medical Examination Fees	5	5	0	5	5	0	5	5	0
15	College Internal Exam Fees	35	35	35	35	35	35	35	35	35
16	College Development Fees	75	75	75	75	75	75	75	75	75
17	Other Miscellaneous Fees	25	25	0	25	25	0	25	25	0
18	Students Insurance Fees	10	10	0	10	10	0	10	10	0
19	University Sport Fees	100	100	0	100	100	0	100	100	0



Fees charts for U.G.Classes i.e. Arts

Sr.No.	Particulars	BAFY			BASY			BATY		
		Paying	EBC	GOI	Paying	EBC	GOI	Paying	EBC	GOI
20	Student Welfare Fees	60	60	0	60	60	0	60	60	0
21	Chancellors Office Activity Fees	20	20	0	20	20	0	20	20	0
22	E-Suvidha	200	200	200	200	200	200	200	200	200
23	Environment Study	0	0	0	0	0	0	150	150	0
24	Examination Fees	0	0	0	0	0	0	0	0	0
25	Zonal Sport Council Fees	50	50	0	50	50	0	50	50	0
26	Ashwmedh Sports Fees	30	30	0	30	30	0	30	30	0
27	Project Fees	0	0	0	0	0	0	10	10	0
28	Passing Certificate	0	0	0	0	0	0	0	0	0
29	Library Deposit	100	100	100	0	0	0	0	0	0
30	Laboratory Deposit	0	0	0	0	0	0	0	0	0
31	Transfer Certificate Fees (T.C)	0	0	0	0	0	0	0	0	0
32	Youth Festival	50	50	0	50	50	0	50	50	0
33	Recounting Fees	0	0	0	0	0	0	0	0	0
34	Merit Prize Contribution	0	0	0	0	0	0	0	0	0
35	Emergency Fees	15	15	0	15	15	0	15	15	0
36	Convocation Fees	0	0	0	0	0	0	0	0	0
37	Book Bank Fees	10	10	0	10	10	0	10	10	0
38	Loss of Books Fees	0	0	0	0	0	0	0	0	0
39	Chancellors Office Expenses Fees	35	35	0	35	35	0	35	35	0
40	SRTMUN NSS Fees	15	15	15	15	15	15	15	15	15
	TOTAL FEES	2500	1400	520	2150	1050	420	2310	1210	420

PRINCIPAL

Nutan Mahavidyalaya
Sailu, Dist. Parbhani



Fees charts for U.G.Classes i.e. COMMERCE										
Sr.No.	Particulars	B.COM FY			B.COM SY			B.COM TY		
		Paying	EBC	GOI	Paying	EBC	GOI	Paying	EBC	GOI
1	Admission fees	50	50	0	50	50	0	50	50	0
2	Tuition fees	1100	0	0	1100	0	0	1100	0	0
3	Lib fees	150	150	0	0	0	0	0	0	0
4	Lab fees	1500	1500	0	0	0	0	0	0	0
5	Registration fees	0	0	0	0	0	0	0	0	0
6	Students aid fund fees	10	10	0	10	10	0	10	10	0
7	Games fees (GYM)	75	75	0	75	75	0	75	75	0
8	Gathering fees	70	70	70	70	70	70	70	70	70
9	Magazine fees	50	50	0	50	50	0	50	50	0
10	Students forum fees (council)	20	20	0	20	20	0	20	20	0
11	Identity card fees	15	15	0	15	15	0	15	15	0
12	Library card fees	25	25	25	25	25	25	25	25	25
13	Eligibility fees	100	100	0	0	0	0	0	0	0
14	Medical Examination Fees	5	5	0	5	5	0	5	5	0
15	College Internal Exam Fees	35	35	35	35	35	35	35	35	35
16	College Development Fees	75	75	75	75	75	75	75	75	75
17	Other Miscellaneous Fees	25	25	0	25	25	0	25	25	0
18	Students Insurance Fees	10	10	0	10	10	0	10	10	0
19	University Sport Fees	100	100	0	100	100	0	100	100	0
20	Student Welfare Fees	60	60	0	60	60	0	60	60	0
21	Chancellors Office Activity Fees	20	20	0	20	20	0	20	20	0



Fees charts for U.G.Classes i.e. COMMERCE

Sr.No.	Particulars	B.COM FY			B.COM SY			B.COM TY		
		Paying	EBC	GOI	Paying	EBC	GOI	Paying	EBC	GOI
22	E-Suvidha	200	200	200	200	200	200	200	200	200
23	Environment Study	0	0	0	0	0	0	150	150	0
24	Examination Fees	0	0	0	0	0	0	0	0	0
25	Zonal Sport Council Fees	50	50	0	50	50	0	50	50	0
26	Ashwmedh Sports Fees	30	30	0	30	30	0	30	30	0
27	Project Fees	0	0	0	0	0	0	10	10	0
28	Passing Certificate Fees	0	0	0	0	0	0	0	0	0
29	Library Deposit	100	100	100	0	0	0	0	0	0
30	Laboratory Deposit	0	0	0	0	0	0	0	0	0
31	Transfer Certificate Fees (T.C)	0	0	0	0	0	0	0	0	0
32	Youth Festival	50	50	0	50	50	0	50	50	0
33	Recounting Fees	0	0	0	0	0	0	0	0	0
34	Merit Prize Contribution	0	0	0	0	0	0	0	0	0
35	Emergency Fees	15	15	0	15	15	0	15	15	0
36	Convocation Fees	0	0	0	0	0	0	0	0	0
37	Book Bank Fees	10	10	0	10	10	0	10	10	0
38	Loss of Books Fees	0	0	0	0	0	0	0	0	0
39	Chancellors Office Expences Fees	35	35	0	35	35	0	35	35	0
40	SRTMUN NSS Fees	15	15	15	15	15	15	15	15	15
		4000	2900	520	2150	1050	420	2310	1210	420

PRINCIPAL
Nutan Mahavidyalaya
Sailu, Dist. Parbhani



Fees charts for U.G.Classes i.e. Science										
Sr.No.	Particulars	B.Sc.F.Y.			B.Sc.S.Y.			B.Sc.T.Y.		
		Paying	EBC	GOI	Paying	EBC	GOI	Paying	EBC	GOI
1	Admission fees	50	50	0	50	50	0	50	50	0
2	Tuition fees	1100	0	0	1100	0	0	1100	0	0
3	Lib fees	150	150	0	0	0	0	0	0	0
4	Lab fees	1500	1500	0	0	0	0	0	0	0
5	Registrtrion fees	0	0	0	0	0	0	0	0	0
6	Students aid fund fees	10	10	0	10	10	0	10	10	0
7	Games fees (GYM)	75	75	0	75	75	0	75	75	0
8	Gathering fees	70	70	70	70	70	70	70	70	70
9	Magazine fees	50	50	0	50	50	0	50	50	0
10	Students forum fees (council)	20	20	0	20	20	0	20	20	0
11	Identity card fees	15	15	0	15	15	0	15	15	0
12	Library card fees	25	25	25	25	25	25	25	25	25
13	Eligibility fees	100	100	0	0	0	0	0	0	0
14	Medical Examination Fees	5	5	0	5	5	0	5	5	0
15	College Internal Exam Fees	35	35	35	35	35	35	35	35	35
16	College Devvelopment Fees	75	75	75	75	75	75	75	75	75
17	Other Miscellanoes Fees	25	25	0	25	25	0	25	25	0
18	Students Insurance Fees	10	10	0	10	10	0	10	10	0
19	University Sport Fees	100	100	0	100	100	0	100	100	0



Fees charts for U.G.Classes i.e. Science

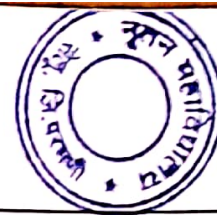
Sr.No.	Particulars	B.Sc.F.Y.			B.Sc.S.Y.			B.Sc.T.Y.		
		Paying	EBC	GOI	Paying	EBC	GOI	Paying	EBC	GOI
20	Student Welfare Fees	60	60	0	60	60	0	60	60	0
21	Chancellors Office Activity Fees	20	20	0	20	20	0	20	20	0
22	E-Suvidha	200	200	200	200	200	200	200	200	200
23	Environment Study	0	0	0	0	0	0	150	150	0
24	Examination Fees	0	0	0	0	0	0	0	0	0
25	Zonal Sport Council Fees	50	50	0	50	50	0	50	50	0
26	Ashwmedh Sports Fees	30	30	0	30	30	0	30	30	0
27	Project Fees	0	0	0	0	0	0	10	10	0
28	Passing Certificate	0	0	0	0	0	0	0	0	0
29	Library Deposit	100	100	100	0	0	0	0	0	0
30	Laboratory Deposit	0	0	0	0	0	0	0	0	0
31	Transfer Certificate Fees (T.C)	0	0	0	0	0	0	0	0	0
32	Youth Festival	50	50	0	50	50	0	50	50	0
33	Recounting Fees	0	0	0	0	0	0	0	0	0
34	Merit Prize Contribution	0	0	0	0	0	0	0	0	0
35	Emergency Fees	15	15	0	15	15	0	15	15	0
36	Convocation Fees	0	0	0	0	0	0	0	0	0
37	Book Bank Fees	10	10	0	10	10	0	10	10	0
38	Loss of Books Fees	0	0	0	0	0	0	0	0	0
39	Chancellors Office Expences Fe	35	35	0	35	35	0	35	35	0
40	SRTMUN NSS Fees	15	15	15	15	15	15	15	15	15
		4000	2900	520	2150	1050	420	2310	1210	420

Principal
Nutan Mahavidyalaya
Sailu, Dist. Parbhani



FEES CHARTS FOR U.G. CLASSES i.e. BACHLAR OF COMPUTER APPLICATION & NON GRANT COURSE

Sr.No.	Particulars	BCA			BCA FY, SY &TY	MA FY, SY.	MAFY,SY	B.COM FY SY TY NON GRANT.
		BCAFY	BCASY	BCATY	GOI	Paying	GOI	Paying
1	Admission fees	50	50	50	0	40	0	50
2	Tuition fees	10100	11100	11500	0	4400	0	4000
3	Lib fees	150	150	150	150	0	0	150
4	Lab fees	1500	1500	1500	1500	0	0	0
5	Registrtrion fees	0	0	0	0	0	0	0
6	Students aid fund fees	10	10	10	0	10	0	10
7	Games fees (GYM)	75	75	75	0	75	0	75
8	Gathering fees	70	70	70	70	70	60	70
9	Magazine fees	50	50	50	0	50	0	50
10	Students forum fees (council)	20	20	20	0	10	0	20
11	Identity card fees	15	15	15	0	15	0	15
12	Library card fees	25	25	25	25	25	25	25
13	Eligibility fees	100	0	0	0	100	0	100
14	Medical Examination Fees	5	5	5	0	5	0	5
15	College Internal Exam Fees	35	35	35	0	35	0	35
16	College Devvelopment Fees	75	75	75	0	75	0	75
17	Other Miscellanoes Fees	25	25	25	0	25	0	25
18	Students Insurance Fees	10	10	10	0	10	0	10
19	University Sport Fees	100	100	100	0	100	0	100
20	Student Welfare Fees	60	60	60	0	60	0	60
21	Chancellors Office Activity Fees	20	20	20	0	20	0	20



Nutan Mahavidyalaya, Saitu.



SE

B.COM FY
SY TY NON
GRANT.

Paying

50

4000

150

0

0

10

75

70

50

20

15

25

100

5

35

75

25

10

100

60

20

Sr.No.	Particulars	BCA			BCA FY, SY & TY	MA FY, SY.	MAFY,SY	B.COM FY SY TY NON GRANT.
		BCAFY	BCASY	BCATY	GOI	Paying	GOI	Paying
22	E-Suvidha	200	200	200	200	200	200	200
23	Environment Study	0	0	0	0	0	0	0
24	Examination Fees	0	0	0	0	0	0	0
25	Zonal Sport Council Fees	50	50	50	0	50	0	50
26	Ashwmedh Sports Fees	30	30	30	0	30	0	30
27	Project Fees	0	0	0	0	0	0	0
28	Passing Certificate	0	0	0	0	0	0	0
29	Library Deposit	100	0	0	100	100	100	100
30	Laboratory Deposit	100	0	0	100	0	0	0
31	Transfer Certificate Fees (T.C)	0	0	0	0	0	0	0
32	Youth Festival	50	50	50	50	50	50	50
33	Recounting Fees	0	0	0	0	0	0	0
34	Merit Prize Contribution	0	0	0	0	0	0	0
35	Emergency Fees	15	15	15	0	15	0	15
36	Convocation Fees	0	0	0	0	0	0	0
37	Book Bank Fees	10	10	10	10	10	10	10
38	Loss of Books Fees	0	0	0	0	0	0	0
39	Chancellors Office Expences Fees	35	35	35	35	35	35	35
40	SRTMUN NSS Fees	15	15	15	0	15	0	15
	TOTAL FEES	13100	13800	14200	2240	5630	480	5400

PRINCIPAL
Nutan Mahavidyalaya
Saitu, Dist. Parbhani

PRINCIPAL
Nutan Mahavidyalaya
Saitu, Dist. Parbhani



The Following Courses and Stream are on Non Grant Basis so Students will have to pay Fees decided by College.
Microbiology, Sanskrit & Computer Science
The Students who have taken admission in B.Com First Year (Non Grant) will have to pay in Second & Third Year also
Non Grant Fees Decided by the college.

Eligibility Fees

Candidate seeking admission to senior college shall have to pay eligibility fees as follows:

- Rs. 100 for students who passed HSC Examination from Maharashtra.
- Rs. 200 for students who are outside of SRTMU, Nanded.
- Rs. 500 for students who are from out of Maharashtra State.
- Candidate seeking admission to third year for B.A., B.Com. and B.Sc. will have to pay Rs. 150 for Environmental Education and Rs. 50 for provisional certificate fees.
- All the students are required to pay university examination fees as per notification of University.
- Fees once paid, will not be refunded in any case.
- BCA, GOI Students are required to pay fees as a security deposit.

General Rules for Admission & Fees

1. The student seeking admissions is required to fill and submit the admission form within the time.
2. The student passing HSC/HSVC Board examination is eligible to take admission for the first year of B.A./B.Com, /BCA and students passing HSC with Science Stream are eligible for B.Sc. I Year
3. All students are required to pay full fees at the time of admission as per the university norms.
4. The GOI students are required to fill on-line Scholarship form within the required time.
5. EBC and Other Scholarship holder are required to fill their respective scholarship forms within the required time.
6. Students are required to pay examination fees of each semester.
7. The students coming from other states or universities are required to submit migration certificate along with admission form and other documents.
8. The admission form should enclose the following certificates and three true copies of each certificate.

i. 12th Passing Transfer Certificate (Original)	ii. 12th Mark Memo (Original)
iii. Migration Certificate (Original) wherever necessary	iv. Income Certificate (Photostat)
v. Caste Certificate (Photostat)	vi. Passport Size Photograph (Two)
vii. Gap Certificate (If necessary)	viii. Voter ID
ix. Unique ID (Aadhar Card)	X Bank Pass Book for All GOI Scholarship Students



9. The scholarship schemes and Government facilities as per norms, will be conveyed through notice board time-to-time and following are the Nodal officers regarding to it:
- Dr.P.S. Kharat (SC Category) ■ Dr. Kirti Nirlwad & Mr.S.B. Garud (ST Category)
 - Dr. U. C. Rathod, Dr.R.R.Bainwad (OBC Category)
10. The student cannot claim any original document till the end of the academic year on any ground. The student will have to pay full fees in case of his requirement of the original documents and his admission will be cancelled immediately.
11. The students taking admission are required to follow the code of conduct meant for students.
12. The College students are required to wear the uniform as decided by the college.
13. The deposits will be refunded as per the following schedule only:
Ist term: 15th Oct. to 30th Oct. IInd Term : 15th Dec. to 30th Dec.
14. For duplicate I-Card and Lib. Card Rs.40/- will be charged as fine.
15. The Transfer Certificate Fees will be charged as follows:

Year	Fees
1968-1978	Rs. 500
1978-1988	Rs. 400
1988-1998	Rs. 400
1998-2008	Rs. 300
2008-2018	Rs. 200
2018- till Date	Rs. 100

16. The students are required to pay the fees of cycle stand decided by college and contractor.
17. Identity card is compulsory to every student in college campus. Student should produce their Identity card whenever asked by the teacher or the non teaching staff in this College campus.



PRINCIPAL
Nutan Mahavidyalaya
Sailu, Dist. Parbhani



GUNVATTA SANMAN PRIZES

Sr.	Name of the Award	Amount	Class	Eligibility	Name of the Sponsorer
1	Vatsalabai Ventkatrao Kate Award	101	B.A. 1 year	For highest marks in History	Dr. P.V. Kate
2	Vatsalabai Ventkatrao Kate Award	101	B.A. 2nd Year	For highest marks in History	Dr. P.V. Kate
3	Laxmibai Annasaheb Patil (Gat) Award	101	B.A./B.Com/B.Sc.	For Girl scoring highest marks from all faculties	Prof. R.A. Gat
4	Sadashiv Narayanrao Joshi Award	501	B.A. 3rd Year	For highest marks in English Optional	Prof. M.S. Joshi
5	Gangabai Ramaji Rawate Award	101	B.A. 3rd Year	For highest marks in Political Science	Prof. P.R. Rawate
6	Mahila Mandal Shri Nagar Colony Selu Award	101	B.A. 3rd Year	For highest marks in B.A. Degree	Mahila Mandal
7	Sadashiv Narayanrao Joshi Award	101	B.A. 3rd Year	For highest marks in Economics	Sow. V.W. Khare
8	Shri Joshi Aravind Sadashivrao Award	101	B.A. 3rd Year	For highest marks in B.A.	Shri Joshi A.S.
9	Sharad Nagorao Mule Award	101	Arts Faculty	For highest Marks in B.A.	Shri N.S. Mule
10	Chandrabhagabai Ramrao Kulkarni Award	101	B.A. 3rd Year	For highest Marks in B.A.	Prin. D.R. Kulkarni
11	Prin. D.R. Kulkarni Award	101	B.A. 3rd Year	For highest Marks in Political Science	Prin. D.R. Kulkarni
12	Anantrao Bhalerao Award	101	B.A. 3rd Year	For highest Marks in B.A. 3rd Year	Shri Bapurao Kale
13	Annasaheb Patil (Gat) Award	101	B.A. 3rd Year	For highest Marks in Economics	Prof. R.A. Gat
14	Shri Joshi Aravind Sadashivrao Award	101	B.Com. 3rd Year	For highest Marks in B.Com. Third Year	Shri Joshi A.S.
15	Surajmal Chunimal Dargad Award	201	B.Com. 3rd Year	For highest Marks in B.Com. Faculty	Prof. H.S. Dargad
16	Shriramji Bhangdiya Award	101	B.Com. 3rd Year	For highest Marks in B.Com Faculty	Shri Bapurao Kale
17	Ambadasrao Ramchandra Joshi Award	101	B.Com. 3rd Year	For highest Marks in B.Com. Faculty for B.C. Student	S.V. Joshi
18	Sonaji Kulkarni Award	101	B.Sc. 3rd Year	For highest Marks in B.Sc. Degree	Shri Bapurao kale
19	Shriramji Bhangdiya Award	101	B.Sc. 3rd Year	For highest Marks in B.Sc. Degree for B.C. Student	V.A. Joshi
20	Laxmibai Narayanrao Kulkarni Award	101	B.Sc. 3rd Year	For highest Marks in Zoology in B.Sc. Degree	Prof. P.N. Kulkarni
21	Narharrao Deshpande Tadlimbekar Award	101	B.Sc. 3rd Year	For highest Marks in Mathematics B.Sc. Degree	Prof. Dr. J.N. Deshpande
22	Shri Joshi Aravind Sadashivrao Award	101	B.Sc. 3rd Year	For highest Marks in B.Sc. 3rd Year	Shri Joshi A.S.
23	Prof. Prabhakar Rawate Award	101	B.A. 3rd Year	For highest Marks in Political Science B.A.	Prof. Rawate P.S.
24	Prof. Prabhakar Rawate Award	101	B.Sc. 3rd Year	For highest Marks in B.Sc. 3rd Year	Prof. Rawate P.S.
25	Shrimati Gangabai Ramji Rawate Award	101	B.Com. 3rd Year	For highest Marks in B.Com.	Prof. Rawate P.S.
26	Sow Indira Prabhakar Rawate Award	101	B.A. 1st Year	For highest Marks in Pol. Sci. B.A. 1 year	Prof. Rawate P.S.
27	Sow Indira Prabhakar Rawate Award	101	B.A. 2nd Year	For highest Markes in Pol. Sci. B.A. 2nd Year	Prof. Rawate P.S.
28	Manikrao Madhavrao Jaibhai Award	101	N.S.S.	For Best Volunteer in NSS (Boys)	Prof. Jaibhai R.M.
29	Shewantabai Manikrao Jaibhai Award	101	N.S.S.	For Best Volunteer in NSS (Girls)	Prof. Jaibhai R.M.
30	Vinayakrao Manikrao Jaibhai Award	101	B.A. 3rd Year	For highest Marks in Economics in B.A.3rd Year (Girl)	Prof. Jaibhai R.M.
31	Ramwalabhji Dailya Award	101	B.Sc. 3rd Year	For highest Marks in Computer Science	Shri P.B. Daliya



Sr.	Name of the Award	Amount	Class	Eligibility	Name of the Sponsorer
32	Shri Kundlikrao Arjunrao Kagane Award	101	B.Sc. 3rd Year	For highest Marks in Micro-Biology	Dr. Suresh Kagane
33	Sheshrao Vyankatrao Borade	501	B.A. 3rd Year	For highest Marks in Faculty	Shri Madhusudan T. Borade
34	Panditrao Kishanrao Kulkarni	301	B.A.3rd Year	For highest Marks in Faculty	Prof.Smt.A.C.Patki
35	Kishansinh Kannushinh Bayas	101	B.A.3rd Year	For highest Marks in Hindi	Prof.Smt.H.K.Bayas
36	Laxmibai Kishansinh Bayas	101	B.A.3rd Year	For highest Marks in Hindi (Opt.) (Girls)	Prof.Smt.H.K.Bayas
37	Jasomati Bansishinh Pawar	101	B.A.3rd Year	For highest Marks in BCA	Ad. Pawar P.B.
38	Aarati Prakash Sirsamkar	5000 -		College Best Player	Dr.P.L. Sirsamkar
39	Shri.Pandurang Kulkarni Awarad	101	B.Sc.3rd Year	For highest Marks in Faculty in Science	Sow.Durgatai R. Kulkarni
40	P.Y.Tarafdar Award	500	B.A.3rd Year	For highest Marks in B.A.T.Y. (Marathi Optional)	Dr.Pratibha Khire (Tarafdar)
41	Bhagwanrao Newpurkar Award	250	B.Com. 3rd Year	For highest Marks in B. Com. (Boy)	Smt. Laxmibai Newpurkar
42	Bhagwanrao Newpurkar Award	250	B.Com. 3rd Year	For highest Marks in B. Com. (Girl)	Smt. Laxmibai Newpurkar
43	Bhagwanrao Newpurkar Award	250	B.Com. 3rd Year	For highest Marks in B. Com. (Reservation Gilr)	Smt. Laxmibai Newpurkar
44	R.B. Shete Award	250	B.Sc. 3rd Year	For highest Marks in Physics	Maya Shete C/o.Pankaj Shete
45	Maharaja Sayajirao Gaikwad Award	501	B.A. 3rd Year	For highest Marks in Marathi	Pra.Y.R.Gaikwad
46	Shri H.B.P. Datta Maharaj Sidhnath Boragaonkar Award	101	B.Sc. 3rd Year	For highest Marks in Zoology	Shri Mohan Sonapawale
47	Shri H.B.P. Datta Maharaj Sidhnath Boragaonkar Award	101	B.Sc. 3rd Year	For highest Marks in Botany	Shri Mohan Sonapawale
48	Shri H.B.P. Datta Maharaj Sidhnath Boragaonkar Award	101	B.Sc. 3rd Year	For highest Marks in Chemistry	Shri Mohan Sonapawale
49	Vandana Asaramji Nakhate Award	101	B.A. 3rd Year	For highest Marks in B.A. TY (Girls)	Dr. Nakhate
50	Vandana Asaramji Nakhate Award	101	B.Sc. 3rd Year	For highest Marks in B. Sc. TY (Girls)	Dr. Nakhate
51	Dr. V. K. Deshpande Award	101	B.Sc. 3rd Year	For highest Marks in Mathematics	Dr. V. K. Deshpande C/o Shri. D. K. Deshapande
52	Gangubai Keshavrao Kulkarni Award	101	B.Sc. 3rd Year	For highest Marks in Physics	Shri Satish Kulkarni Mayur Printers, Nanded
53	Shri P. S. Dafure Retired Teacher Award	201	B.A. 3rd Year	For highest Marks in Marathi	Shri P. S. Dafure
54	Shri.Kishan Chopade Award	250	B.A. 3rd Year	For highest Marks in Political Science	Shri. Kishan Chopade
55	Dr.Bapurao Kaldate Bandhu Award	101	All Faculty	Best Orator Or Varkari Sampradayacha abhyasak	Prin. D.R. Kulkarni
56	Late.Tarabai Sonajipant Kulkarni Award	501	B.A. 3rd Year	For highest Marks in B.A.T.Y.	Sow.Meena Shashikant Kulkarni
57	Late.Prof. Dr.Jivanrao Deshpande	1250	B.Sc. 3rd Year	For highest Marks in Math	Smt.Lilabai J. Deshpande

PRINCIPAL
an mahavidyalaya
Sailu Dist. Solapur



Rules:

01. All prizes will be distributed in a function organized in between 17th to 24th September, per year.
02. A list of eligible students will be displayed on the notice board well in advance.
03. All the eligible students are requested to contact the in-charge faculty, in case of any doubt.
04. All the students and parents are requested to be present in the function.

COLLEGE DISCIPLINARY RULES:

- 1) Students should keep themselves abreast with the day -to -day activities of the college and see the notice boards regularly for getting relevant and latest information and notices.
- 2) Causing damage to college property, shall be treated as serious offence. Such behaviour will attract severe penalty/punishment and restriction from the college.
- 3) Disrespect of faculty, office staff and guests is considered as an act of indiscipline.
- 4) Identity Card should be produced by the student whenever asked by any member or the office staff or faculty.
- 5) Minimum 75% attendance in the classroom is compulsory.
- 6) It is expected that perfect silence should be maintained in the campus.
- 7) **Mobiles/Cell phones:** Use of Cell phones are banned in campus. Students are not permitted to use cell phones in the Class rooms. Violation of this rule, will result in confiscation of the phone and a fine.
- 8) It is mandatorily for all students to observe the rules and Regulations by the college time-to-time. Serious actions would be taken against who defy there rules and regulations. Admission of such students is liable to be cancelled.
- 9) College office will stay closed on 1st and 3rd Saturday of each month.

ANTI RAGGING REGULATION :-

Ragging is legally banned. It is a punishable offence. In view of the increasing number of events of ragging, the University Grants Commission has passed the "UGC Regulation on curbing the menace of Ragging in Higher Educational Institutions, 2009. Ragging is "Any conduct by any student or students whether by words spoken or written or by an act which has the effect of teasing, treating or handing with rudeness a fresher or any other student, or in rowdy or in-disciplined activities by any students which causes



or is likely to cause annoyance, hardship or psychological harm or to raise fear or apprehension thereof in any fresher or any other student or asking any student to do any act which such student will not in any ordinary course do and which has the effect of causing or generating a sense of shame, or torment of embarrassment so as to adversely affect, the physique or psyche of such fresher or any other student, with or without an intent to derive a sadistic pleasure or showing of power, authority of superiority by a student over any fresher or any other student.”

The Anti – Ragging Committee may, depending on the nature and gravity of the quit established by the Anti- Ragging Squad, award, to those found guilty, one or more of the following punishments namely:

1. Suspension from attending classes and academic privileges.
2. Withholding / withdrawing scholarship / fellowship and other benefits.
3. Debarring from appearing in the test / examination or other evaluation process.
4. With holding results.
5. Debarring from representing the institution in any regional, national or International meet, tournament, youth festival, etc.
6. Suspension / expulsion from the hostel.
7. Cancellation of admission
8. Suspension of the guilty student from the institution for the period to ranging from one to four semesters.
9. Expulsion of the guilty student from the institution and consequent debarring from admission to any other institution for a specified period. Provided that where the persons committing or abetting the act or ragging are not identified, the institution shall resort to collective punishment.
10. Wednesday is no vehicle day.

The students are advised to consult the Anti- Ragging Committee in case of emergency.

Note – Students will have to submit the Annexure – I (Affidavit by the students) and Annexure – II (Affidavit by parent/ Guardian at the time of admission.

PRINCIPAL

Nutan Mahavidyalaya
Sailu, Dist. Parbhani



Nutan Mahavidyalaya, Sailu.



TEACHING STAFF OF THE COLLEGE:

1	Dr. M.S. Shinde	I/C Principal & Head Dept. of English
2	Dr. U.C. Rathod	Vice Principal & Head Dept. of History
3	Mr. V.R. Tengse	Head, Dept. of Commerce
4	Dr. R. M. Khadap	Professor, Head, Dept. of Zoology
5	Dr. M. R. Katkar	Librarian
6	Dr. R.A. Zodge	Head, Dept. of Marathi
7	Dr. A.C. Patki	Head, Dept. of Hindi
8	Dr. M.D. Sawandkar	Asst. Professor, Commerce
9	Dr. R.R. Bainwad	Head, Dept. of Political Sci.
10	Dr. P.S. Kharat	Asst. Professor, Zoology
11	Mr. V.B. Patare	Head, Dept. of Mathematics
12	Mr. K.K. Kadam	Physical Education Director
13	Dr. K.S. Niralwad	Head, Dept. of Chemistry
14	Dr. N.S. Padmavat	Asst. Professor, English
15	Mr. P.R. Pande	Asst. Professor, Chemistry
16	Dr. P.R. Kanthale	Head, Dept. of Botany
17	Dr. B.K. Kumthekar	Head, Dept. of Physics
18	Mr. S.B. Garud	Asst. Professor, Mathematics

ADMINISTRATIVE STAFF OF THE COLLEGE

1	Ku. U.R. Kadam	Office Supt.
2	Mr. M.S. Maslekar	L.G. Stenographer
3	Mr. P. N. Khandare	Head Clerk
4	Mr. R. B. Faridkhane	Lab. Assistant
5	Mr. V. B. Salve	Senior Clerk
6	Mr. V. V. Waghmare	Lab. Assistant
7	Mr. K. C. Kalyane	Jr. Clerk
8	Mr. R. S. Gambhire	Lab. Assistant
9	Mr. V. S. Rathod	Lab. Assistant
10	Smt. D.R. Shere	Jr. Clerk

PRINCIPAL
Nutan Mahavidyalaya
Sailu, Dist. Parbhani




THE NON-TEACHING STAFF OF THE COLLEGE

01	Mr. R. K. Solanke	Peon
02	Mr. B.R. Chintamani	Lab. Attendant
03	Mr. P. D. Solanke	Lab. Attendant
04	Mr. S. N. Dhengle	Lib. Attendant
05	Mr. B. H. Padghan	Lab. Attendant
06	Mr. S.A. Ghandge	Lab. Attendant
07	Mr. L. B. Sakhare	Lab. Attendant
08	Mr. D. N. Rithe	Lab. Attendant
09	Mr. R. B. Shinde	Peon
10	Mr. D. B. Pathade	Peon
11	Mr. A. P. Gath	Lab. Attendant
12	Mr. S. G. Solanke	Peon
13	Smt.G.A.More	Lab. Attendant
14	Mr. D.M. Khandare	Lib. Attendant
15	Smt. R.V. Gaikwad	Peon
16	Mr. K.T. Kanade	Lab. Attendant
17	Ku. R.B. Hurduke	Lab. Attendant
18	Mr. D.D. Kakde	Lab. Attendant
19	Mr. S.N. Pastapure	Lib. Attendant
20	Mr. R.D. Ghanwat	Lib. Attendant
21	Mr. K.S.Tak	Peon
22	Mr. P.N. Kalbande	Peon
23	Mr. V.M. Gaikwad	Lib. Attendant
24	Mr.P.R. Halge	Lab. Attendant
25.	Smt. R. R. Muradi	Hamal
26.	Shri R.B. Dhable	Hamal

College Development Committee :

1	Dr.S.M.Loya	President
2	Mr. Rangnathrao Gath	Member
6	Mr. Sitaramji Mantri	Member
5	Dr. V.N. Nagori	Member
5	Mr. V.B. Patare	Member (Teacher Representative)
6	Dr. K. K. Kadam	Member (Teacher Representative)
7	Dr. K.S. Niralwad	Member (Teacher Representative)
8	Dr. U.C. Rathod	Member (HOD History)
9	Dr.N.S.Padmavat	Member (Co-ordinator IQAC)
10	Mr. V.B. Salve	Member (Non Teaching Representative)
11	Dr. M.S. Shinde	I/c Principal / Secretary
12	Vacant Member	(Student Representative)
13	Mr.D.K.Deshpande	Vice President (Invitee)
14	Dr. V.K. Kothekar	Secretary (Invitee)
15	Mr.Jayprakashji Bihani	Joint Secretary (Invitee)
16	Miss U.R. Kadam	Office Supt. (Invitee)


Nutan Mahavidyalaya
Sailu, Dist. Parbhani



Nutan Mahavidyalaya, Sailu.



NUTAN VIDYALAYA
SHIKSHAN SANSTHA SELU
DIST PARBHANI

LIST OF EXECUTIVE COUNCIL
(2022-2027)

01	Mr. Dr. S.M. Loya	President
02	Mr. D.K. Deshpande	Vice President
03	Dr. V.K. Kothekar	Secretary
04	Mr. Jayprakash Bihani	Joint Secretary
05	Mr. D.R. Kulkarni	Member
06	Mr. Sitaramji Mantri	Member
07	Mr. Prakashchandji Binayake	Member
08	Mr. Ragnathrao Gath	Member
09	Dr. Vijayandraji Nagori	Member
10	Mr. Dattaraoji Pawade	Member
11	Mr. Makrand Digaraskar	Member
12	Mr. Nandkishorji Baheti	Member
13	Mr. Aziz Khan Pathan	Member
14	Mr. Rajeshji Gupta	Member
15	Dr. Sharad Kulkarni	Member
16	Dr. M.S. Shinde	I/C Principal, N.M. Selu
17	R.M. Khadap	Teachers Representative (Senior)
18	Mr. P.S. Sonwane	Teachers Representative (Junior)
19	Smt. S.S. Kharabe	H.M. Smt. L.L.R. Nutan Kanya Prashala
20	Smt. S.P. Ramdasi	Teachers Representative (N.K.P.)
21	Mr. P.T. Kapate	Teachers Representative (N.K.P.)

Invitee

1.	Mr. N.Y. Solanke	Head Master, Nutan Vidyalaya Selu
2.	Mr. S.D. Bendosure	Head Master, Smt. S.B. Bihani Nutan Primary School
3.	Mr. N.P. Patil	Principal, Nutan English School
4.	Mr. A. P. Ratnaparkhi	Co-ordinator, Nutan Pre-Primary School

PRINCIPAL

Nutan Mahavidyalaya
Sailu, Dist. Parbhani



Nutan Mahavidyalaya, Sailu.




PRINCIPAL
Nutan Mahavidyalaya
Sailu, Dist. Parbhani




Birth anniversary of S.R. Ranganathan celebrated in College Library.



Mr. Pradip Solanke while giving a lecture on the occasion of Chhatrapati Shivaji Maharaj Jayanti



'Kariyar Katta Sanwad Melava' Dr. Yashwant Shitole interacting with students.


PRINCIPAL
Mahavidyalaya
Dist. Parbhani



Dr. Dilip Chavan while giving a lecture on the occasion of Dr. Babasaheb Ambedkar Jayanti on New Education Policy 2020.



Vice Chancellor (SRTMU, Nanded) honoring Miss. Kavya Mehata for Standing first in B.C.A. in the University in the Convocation Ceremony.

Our Sport Stars
All India Inter University Participants



Ku. Sakshi Shelke
(Baseball)



Mr. Saurabh Shinde
(Softball)



Mr. Prathmesh Bhandwale
(Baseball)



Mr. Somnath Mahajan
(Yoga)